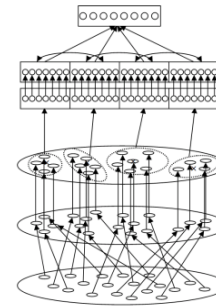


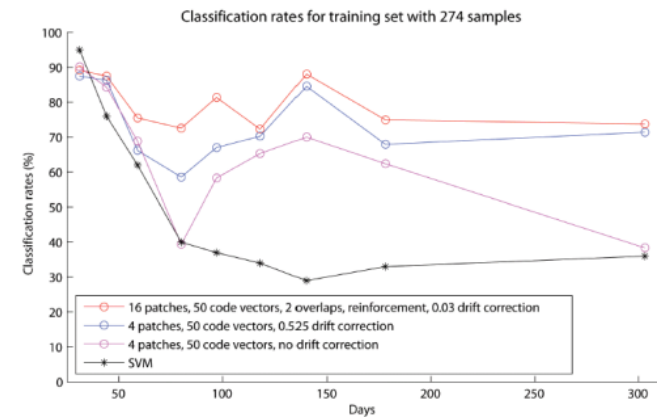
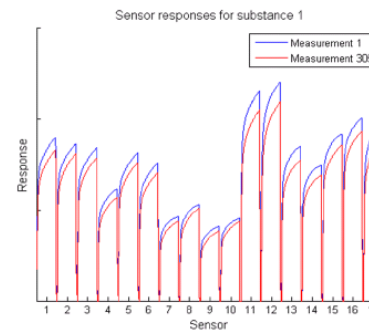
- Abstract neural models

- Full olfactory system model

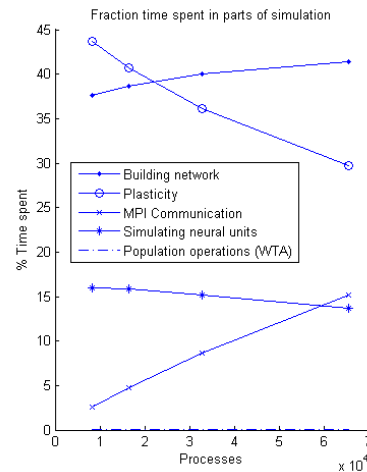
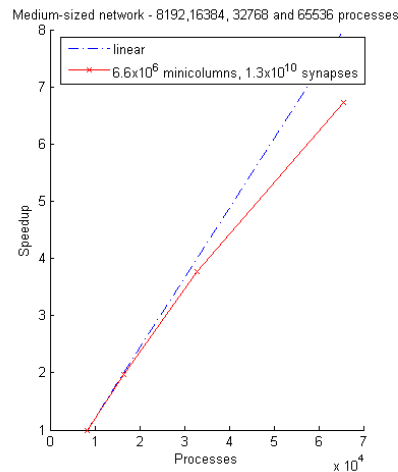
- Memory, odour segmentation, classification, concentration-invariant coding, noise insensitivity, pattern completion etc.



- Application, real chemosensors

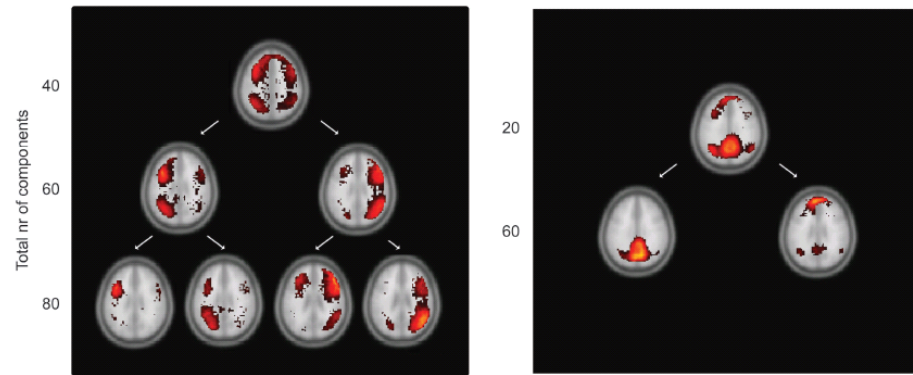


- Large-scale modeling



- Development of data analysis methods (so far mainly for fMRI)

Division of networks into sub-networks



(+ PET project running, MEG and semantics+EEG planned)

